



路政署
HIGHWAYS DEPARTMENT
港珠澳大橋香港工程管理處
Hong Kong - Zhuhai - Macao Bridge
Hong Kong Project Management Office

Contract No. HY/2011/03: Hong Kong-Zhuhai-Macao Bridge
Hong Kong Link Road - Section between Scenic Hill
and Hong Kong Boundary Crossing Facilities
Landscape and Visual Plan Rev 14

APPENDIX A: MITIGATION MEASURES PLAN: MITIGATION MEASURES DURING DETAILED DESIGN STAGE



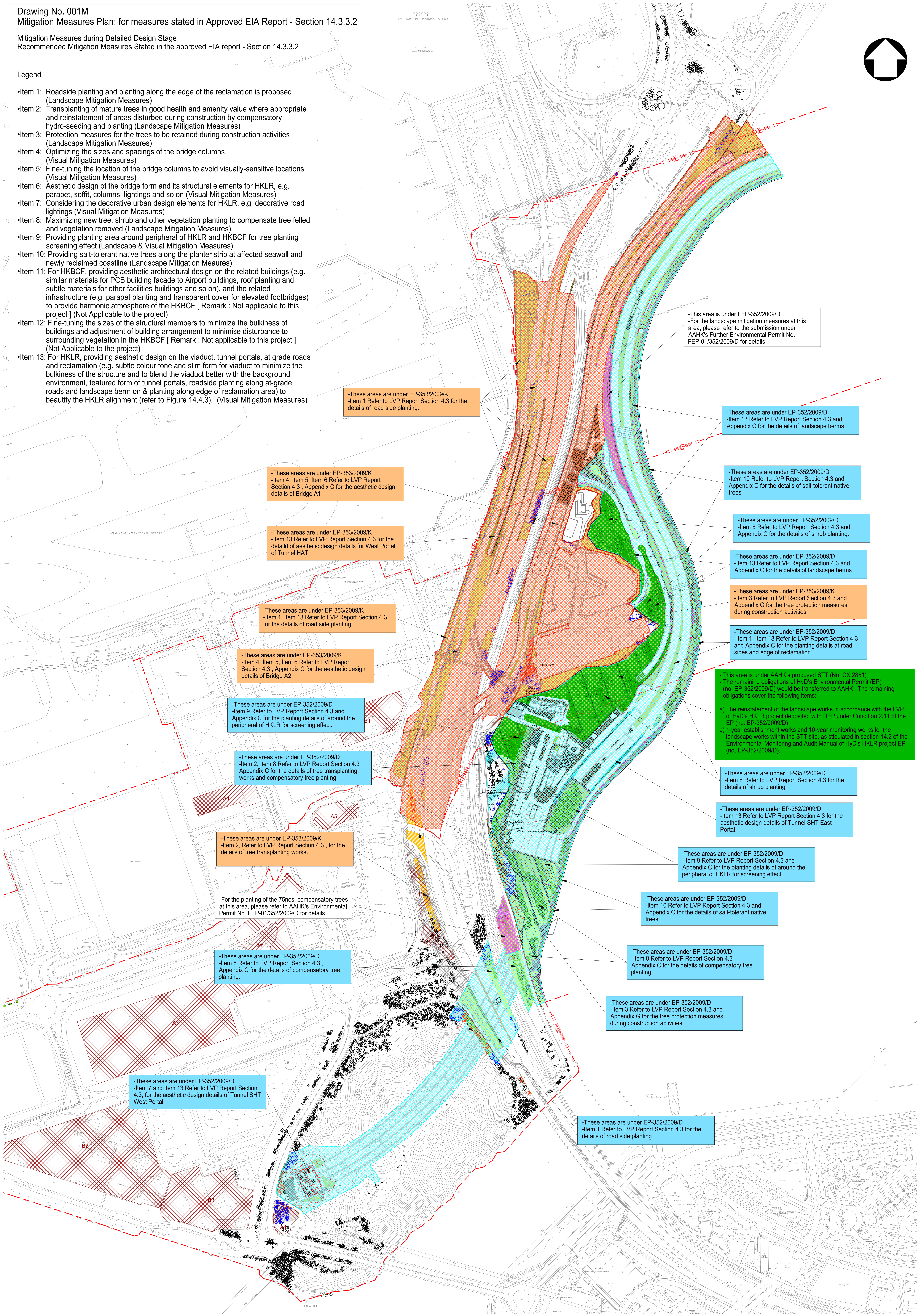
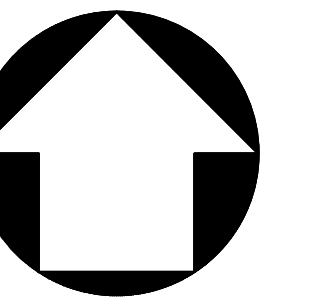
中國建築工程(香港)有限公司
CHINA STATE CONSTRUCTION ENGINEERING (HONG KONG) LTD.

Drawing No. 001M
 Mitigation Measures Plan: for measures stated in Approved EIA Report - Section 14.3.3.2

Mitigation Measures during Detailed Design Stage
 Recommended Mitigation Measures Stated in the approved EIA report - Section 14.3.3.2

Legend

- Item 1: Roadside planting and planting along the edge of the reclamation is proposed (Landscape Mitigation Measures)
- Item 2: Transplanting of mature trees in good health and amenity value where appropriate and reinstatement of areas disturbed during construction by compensatory hydro-seeding and planting (Landscape Mitigation Measures)
- Item 3: Protection measures for the trees to be retained during construction activities (Landscape Mitigation Measures)
- Item 4: Optimizing the sizes and spacings of the bridge columns (Visual Mitigation Measures)
- Item 5: Fine-tuning the location of the bridge columns to avoid visually-sensitive locations (Visual Mitigation Measures)
- Item 6: Aesthetic design of the bridge form and its structural elements for HKLR, e.g. parapet, soffit, columns, lightings and so on (Visual Mitigation Measures)
- Item 7: Considering the decorative urban design elements for HKLR, e.g. decorative road lightings (Visual Mitigation Measures)
- Item 8: Maximizing new tree, shrub and other vegetation planting to compensate tree felled and vegetation removed (Landscape Mitigation Measures)
- Item 9: Providing planting area around peripheral of HKLR and HKBCF for tree planting screening effect (Landscape & Visual Mitigation Measures)
- Item 10: Providing salt-tolerant native trees along the planter strip at affected seawall and newly reclaimed coastline (Landscape Mitigation Measures)
- Item 11: For HKBCF, providing aesthetic architectural design on the related buildings (e.g. similar materials for PCB building facade to Airport buildings, roof planting and subtle materials for other facilities buildings and so on), and the related infrastructure (e.g. parapet planting and transparent cover for elevated footbridges) to provide harmonic atmosphere of the HKBCF [Remark : Not applicable to this project] (Not Applicable to the project)
- Item 12: Fine-tuning the sizes of the structural members to minimize the bulkiness of buildings and adjustment of building arrangement to minimise disturbance to surrounding vegetation in the HKBCF [Remark : Not applicable to this project] (Not Applicable to the project)
- Item 13: For HKLR, providing aesthetic design on the viaduct, tunnel portals, at grade roads and reclamation (e.g. subtle colour tone and slim form for viaduct to minimize the bulkiness of the structure and to blend better with the background environment, featured form of tunnel portals, roadside planting along at-grade roads and landscape berm on & planting along edge of reclamation area) to beautify the HKLR alignment (refer to Figure 14.4.3). (Visual Mitigation Measures)



-These areas are under EP-353/2009/K
 -Item 1 Refer to LVP Report Section 4.3 for the details of road side planting.

-This area is under FEP-352/2009/D
 -For the landscape mitigation measures at this area, please refer to the submission under AAHK's Further Environmental Permit No. FEP-01/352/2009/D for details

-These areas are under EP-352/2009/D
 -Item 13 Refer to LVP Report Section 4.3 and Appendix C for the details of landscape berms

-These areas are under EP-353/2009/K
 -Item 4, Item 5, Item 6 Refer to LVP Report Section 4.3, Appendix C for the aesthetic design details of Bridge A1

-These areas are under EP-352/2009/D
 -Item 10 Refer to LVP Report Section 4.3 and Appendix C for the details of salt-tolerant native trees

-These areas are under EP-353/2009/K
 -Item 13 Refer to LVP Report Section 4.3 for the detail of aesthetic design details for West Portal of Tunnel HAT.

-These areas are under EP-352/2009/D
 -Item 8 Refer to LVP Report Section 4.3 and Appendix C for the details of shrub planting.

-These areas are under EP-353/2009/K
 -Item 1, Item 13 Refer to LVP Report Section 4.3 for the details of road side planting.

-These areas are under EP-352/2009/D
 -Item 13 Refer to LVP Report Section 4.3 and Appendix C for the details of landscape berms

-These areas are under EP-353/2009/K
 -Item 4, Item 5, Item 6 Refer to LVP Report Section 4.3, Appendix C for the aesthetic design details of Bridge A2

-These areas are under EP-353/2009/K
 -Item 3 Refer to LVP Report Section 4.3 and Appendix G for the tree protection measures during construction activities.

-These areas are under EP-352/2009/D
 -Item 9 Refer to LVP Report Section 4.3 and Appendix C for the planting details of around the peripheral of HKLR for screening effect.

-These areas are under EP-352/2009/D
 -Item 1, Item 13 Refer to LVP Report Section 4.3 and Appendix C for the planting details at road sides and edge of reclamation

-These areas are under EP-352/2009/D
 -Item 2, Item 8 Refer to LVP Report Section 4.3, Appendix C for the details of tree transplanting works and compensatory tree planting.

- This area is under AAHK's proposed STT (No. CX 2851)
 - The remaining obligations of HyD's Environmental Permit (EP) (no. EP-352/2009/D) would be transferred to AAHK. The remaining obligations cover the following items:
 a) The reinstatement of the landscape works in accordance with the LVP of HyD's HKLR project deposited with DEP under Condition 2.11 of the EP (no. EP-352/2009/D).
 b) 1-year establishment works and 10-year monitoring works for the landscape works within the STT site, as stipulated in section 14.2 of the Environmental Monitoring and Audit Manual of HyD's HKLR project EP (no. EP-352/2009/D).

-These areas are under EP-353/2009/K
 -Item 2, Refer to LVP Report Section 4.3, for the details of tree transplanting works.

-These areas are under EP-352/2009/D
 -Item 8 Refer to LVP Report Section 4.3 for the details of shrub planting.

-For the planting of the 75nos. compensatory trees at this area, please refer to AAHK's Environmental Permit No. FEP-01/352/2009/D for details

-These areas are under EP-352/2009/D
 -Item 13 Refer to LVP Report Section 4.3 for the aesthetic design details of Tunnel SHT East Portal.

-These areas are under EP-352/2009/D
 -Item 8 Refer to LVP Report Section 4.3, Appendix C for the details of compensatory tree planting.

-These areas are under EP-352/2009/D
 -Item 9 Refer to LVP Report Section 4.3 and Appendix C for the planting details of around the peripheral of HKLR for screening effect.

-These areas are under EP-352/2009/D
 -Item 10 Refer to LVP Report Section 4.3 and Appendix C for the details of salt-tolerant native trees

-These areas are under EP-352/2009/D
 -Item 8 Refer to LVP Report Section 4.3, Appendix C for the details of compensatory tree planting

-These areas are under EP-352/2009/D
 -Item 3 Refer to LVP Report Section 4.3 and Appendix G for the tree protection measures during construction activities.

-These areas are under EP-352/2009/D
 -Item 7 and Item 13 Refer to LVP Report Section 4.3, for the aesthetic design details of Tunnel SHT West Portal

-These areas are under EP-352/2009/D
 -Item 1 Refer to LVP Report Section 4.3 for the details of road side planting